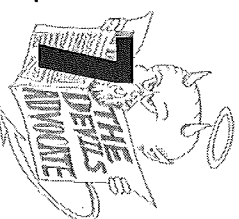


In Our Opinion



Question of the Week
 ~*~
 What is your favorite Christmas song?

Senior

“All I want for Christmas is you” — Lauren Riggs



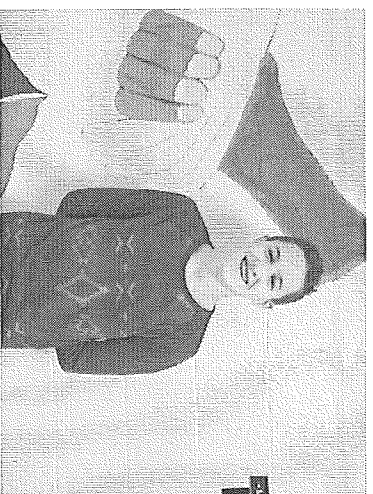
Junior

“Rudolph the Red Nose Reindeer” — Andrew Reed



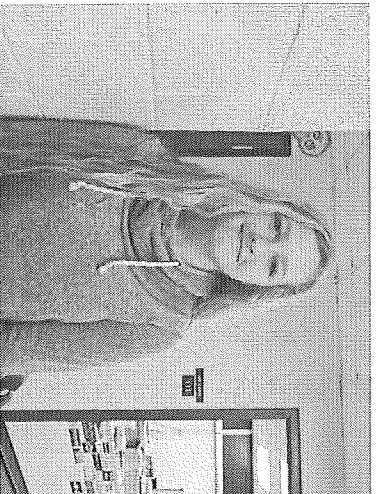
Sophomore

“Feliz Navidad” — Patrick McCloskey



Freshman

“Silent Night” — Jessica Weaver



Staff Editorial: Putting the Brrakkkes on Winter Driving Accidents

Blue Devil's Advocate

Adviser
 Mr. Murphy
News Editor:
 Alexa Dentai
 Hailey Dzegelewski
 Nick Thomas
Editorial Editor:
 Cecily McPherson
Jenna Stafford
Sports Editors:
 Trevor Barrett
 Brendan Hart
Features Editors:
 Beau Brockett
 Paige Koehn
Advertising
Manager:
 Joe Bergen
Coordinating Editor:
 Jacquelyn Loria
 Connor Hill

Staff Writers:
 Haleigh Beedon
 Katie Brown
 Lauren Duché
 Hayley Fortuna
 Emma Gillem
 Brendon Jacques
 Max Leesch
 Kaitlyn Milliken
 Brandon Stein
 Ashleigh Siter
 Christina Thomas
 Brandon VanGorp

Mission Statement

Richmond High School's student newspaper, The Blue Devil's Advocate, strives to serve the student body and provide a public forum to make their ideas heard to the school and community. Our goal is to provide both accurate and balanced stories in order to enlighten understanding, entertain, and inform.

Letters

We invite readers to share their thoughts with us by writing to the Editor. See the drop off box in the library or you may email us at: mmurphy@richmond.k12.nj.us. Include your name, address, and grade level.

Like it or not, winter is nearly upon us.

For children, this time of year means playing in the snow and chasing snowflakes. But for many teens and adults, this season does not come without concern over driving conditions.

That is why we, the Editorial Staff, want to remind Richmond students, staff and community to be cautious while driving this winter season.

For younger high school drivers, this will be the first year for them to drive in snowy weather. To prepare them, parents should take their kids out for practice in the snow before they do it by themselves. This will give them a better understanding on how to operate a vehicle in poor conditions.

Richmond High School administration does what they can to protect students by canceling school when they feel the weather conditions are unsafe. However, there are times when the roads are covered with some snow and school will still be in session.

In situations like these it is important for students to stay focused on their way to school and stay aware of vehicles around them. Being late and receiving a tardy is much better than speeding and risking your life as well as others.

Last winter, we were hit with a polar vortex. This weather phenomenon beat the old record of 93.6 inches of snow boasting a new record of 94.8 inches.

According to weather.com, Michigan was one of the top 10 coldest states on record last winter.

Although the farmers' almanac predicts a milder winter this year, weather is unpredictable. It is important to take precaution to keep the community prepared and safe.

Listed below are tips for drivers of all ages to follow:

- Get your breaks checked as well as the rest of the car so it is in the best condition for the winter weather.

- Break away before normal stopping time and prior to turning. Speeds around a turn in the winter should be no more than 5mph.

- Keep a great distance between you and other cars in front of you. Other cars may get annoyed of this but it is better to be cautious than be sorry.

- If you press the brake and begin to slide, pump breaks over and over. This should help you to stop. If you still feel you will not be able to stop aim for a bush or soft object on the side of the road.

- Stay calm and keep both hands on the wheel. This will allow you to remain in control if something does go wrong.

- Keep useful items in your car. A shovel, bag of salt, ice scraper, snowbrush, warm clothing, blanket, water, accessories, etc.

- And most importantly, absolutely no texting or playing Trivia Crack! Referring to www.iish.org, the fatal crash rate per mile driven for 16-19 year-olds is nearly 3 times the rate for drivers ages 20 and over.

This winter, let our Blue Devil community not contribute to those statistics. Taking precaution and driving safe will save lives. The tips included in this article will assist our students, staff and members of our community to enjoy the fluffy, white, glistening snow, as well as have a fun, spirited holiday season.